



Program T-Shirt Order Guide

Spring 2024

PROGRAM SHIRT SIZING

Youth Sizes M-L	Chest: Inch	Length: Inch
Small	17	22
Medium	18	23.5
Large	19	25

Adult Sizes SM-XXL (Unisex)	Chest: Inch	Length: Inch
Small	18	28
Medium	20	29
Large	22	30
Extra Large	24	31
2XLarge	26	32
3XLarge	28	33



GIRLS ON THE RUN

T-SHIRT INFO
 Color: Heliconia
 Brand: Gildan
 Style #: 5000



HEART & SOLE

T-SHIRT INFO
 Color: Jade Dome
 Brand: Gildan
 Style #: 8000

PROGRAM SHIRT PRICING

(Includes Standard Shipping)

Shirt Style	Unit Price	With Custom Back Art (includes Base Unit Price)				
		24-99	100-249	250-499	500-4,999	5,000+
Youth Short Sleeve	\$3.55	\$5.10	\$4.90	\$4.60	\$4.40	\$4.30
Adult Short Sleeve	\$3.80	\$5.35	\$5.15	\$4.85	\$4.65	\$4.55
Long Sleeve	\$7.25	\$8.80	\$8.60	\$8.30	\$8.10	\$8.00





Program T-Shirt Order Guide

Spring 2024



STEPS FOR ORDERING

1

Visit [CreateMyTee.com/GOTR](https://www.createmytee.com/GOTR) for complete ordering info, FAQ, and more.

2

On the above page, click the orange "Start a New GOTR Program Shirt Order" button to initiate a new order. We recommend and prefer you do this as far in advance as possible. Your order will simply remain in your account while you work with your artist to perfect the artwork and your project manager to plan the timeline. You may initiate multiple separate orders for a season for scenarios such as ordering coach shirts earlier than participant shirts.

3

When ready, click "Check Out" in the Art Center to begin the process of entering (or uploading from Pinwheel) final quantities, confirming order details, and selecting your payment method.

4

Once you complete checkout, your order will be sent to our print team. You'll receive an e-mail as with tracking info as soon as your order ships.

5

Open your order as soon as it arrives to ensure it is correct. This will allow time should a correction be needed. Contact your project manager via the Art Center, phone, or e-mail should any problems arise.



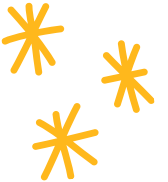
CUSTOM BACK PRINTING

CreateMyTee can print custom back artwork (including words such as "COACH," sponsor logos, or other art) on your shirts as indicated in the pricing table. Please provide sponsor logos in the acceptable formats or a \$15 charge per logo will apply.



ACCEPTABLE FORMATS (VECTOR ART)

- EPS
- AI (Adobe Illustrator)
- SVG



UNACCEPTABLE FORMATS (RASTER/PIXEL ART)

- JPEG, GIF, TIFF or BMP
- Logos or images from the internet

Art and logos may be uploaded via your order's Art Center, available once your order has been created. You only need to upload logos once, not on every item in the order.

CreateMyTee artists can reuse art, including sponsor logos, from your Fall 2023 order. Simply indicate which logos should be reused when setting up your order in the portal. This will save your artist time and avoid any file conversion fees!



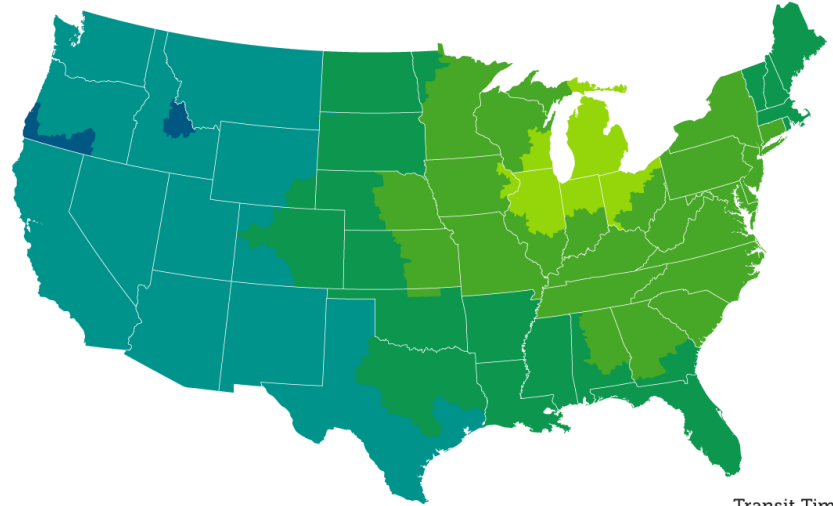
Program T-Shirt Order Guide

Spring 2024



SHIPPING DETAILS

- Free ground shipping – U.S. locations
- Councils are strongly encouraged to provide a business address for shipments
- Standard orders will ship within 5-7 days of checkout (where art is approved and final quantities entered)
- Orders with custom back art will ship within 10 business days of checkout
- Daily cut-off is at 3:00PM Eastern Time



Transit Time

- 1 Day
- 2 Days
- 3 Days
- 4 Days
- 5 Days

SPLIT-PACKING

- CreateMyTee is piloting an expanded split-packing option for this season
- Split-packed orders are boxed by team and delivered to a single location, eliminating the need to sort the overall order on arrival
- Quantity, size, and team/destination data for split-packing and split-shipping will be uploaded using data from Pinwheel during Checkout

SPLIT-SHIPPING (UPCHARGE)

- Councils that previously used CGP's drop-ship may use CreateMyTee's split-shipping service
- Split-shipped orders will be boxed by destination and delivered to separate locations
- Shipping costs will be added to the final order invoice

- Please see the UPS zone map which illustrates the shipping time from CreateMyTee's facility in Grand Rapids, Michigan, to your location. Remember this chart refers to business days only
- Consider adding extra days to your ordering timeline to allow for unexpected shipping delays
- The above map is an estimate and may be subject to change near day edges
- Your Project Manager can provide exact delivery timeline info for your shipping address

